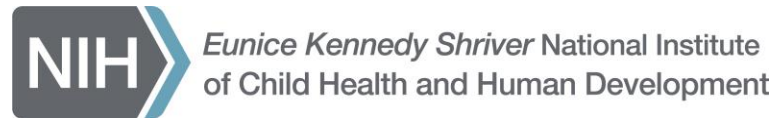


# NICHD and Pediatric Research at NIH

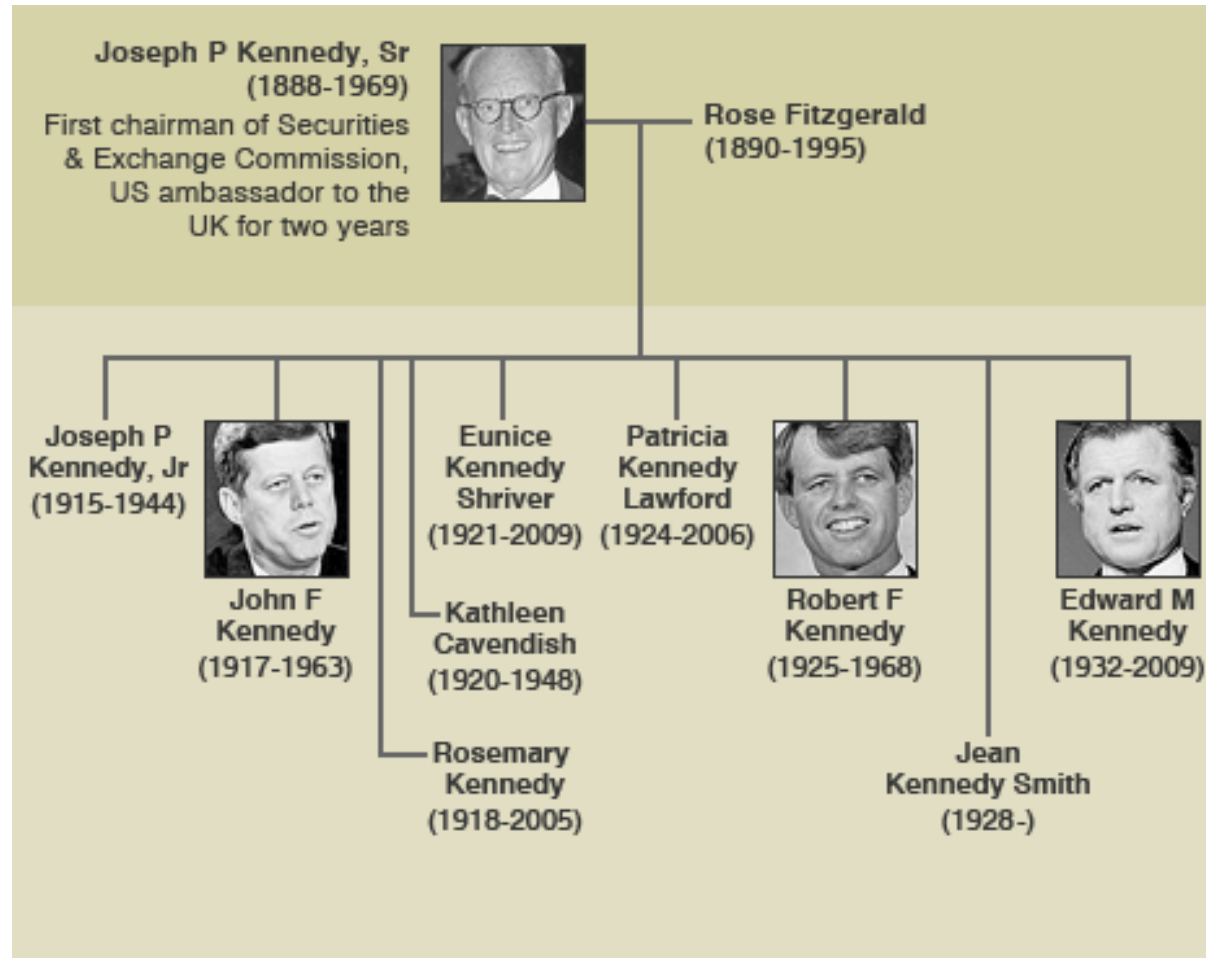
Rohan Hazra, MD

Acting Associate Director for Extramural Research

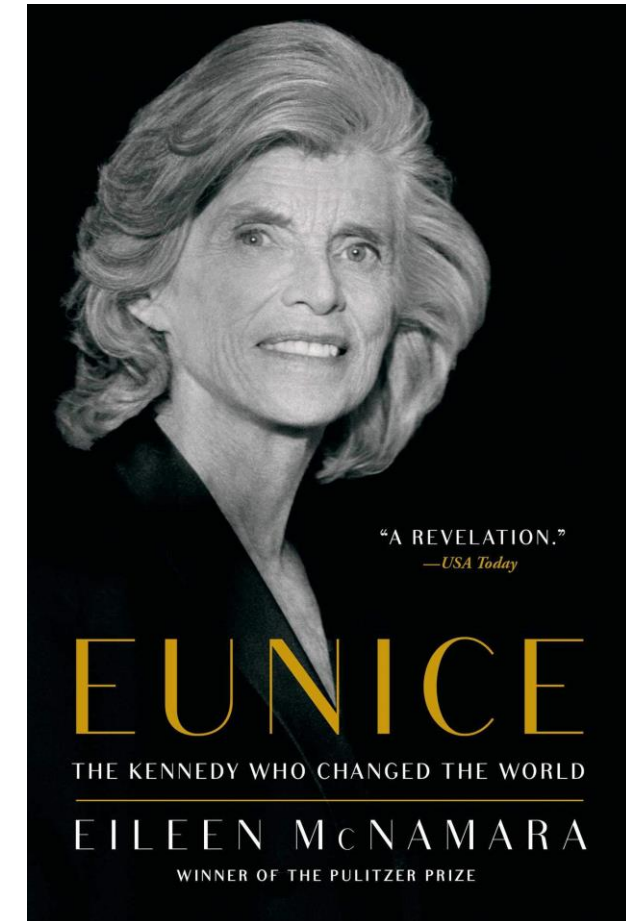
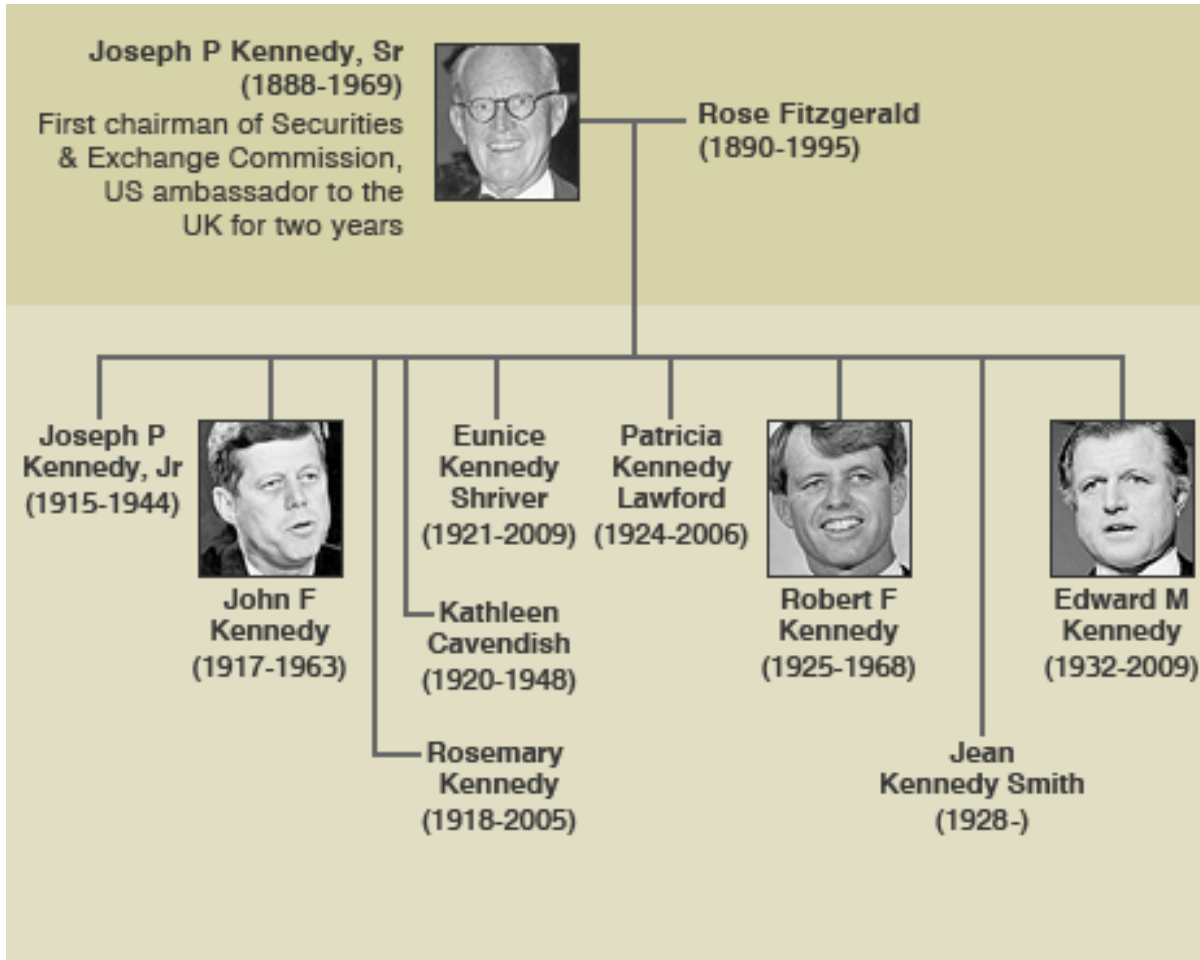
January 6, 2021



# What's In a Name?



# The Kennedy Who Changed the World



# NICHD

- President Kennedy signed authorization to establish NICHD in 1962 (Public Law 87-838)



“PART E—INSTITUTES OF CHILD HEALTH AND HUMAN DEVELOPMENT  
AND OF GENERAL MEDICAL SCIENCES

“ESTABLISHMENT OF INSTITUTE OF CHILD HEALTH AND HUMAN  
DEVELOPMENT

“SEC. 441. The Surgeon General is authorized, with the approval of the Secretary, to establish in the Public Health Service an institute for the conduct and support of research and training relating to maternal health, child health, and human development, including research and training in the special health problems and requirements of mothers and children and in the basic sciences relating to the processes of human growth and development, including prenatal development.

**NICHD**

- Renamed in 2007 – *Eunice Kennedy Shriver* National Institute of Child Health and Human Development



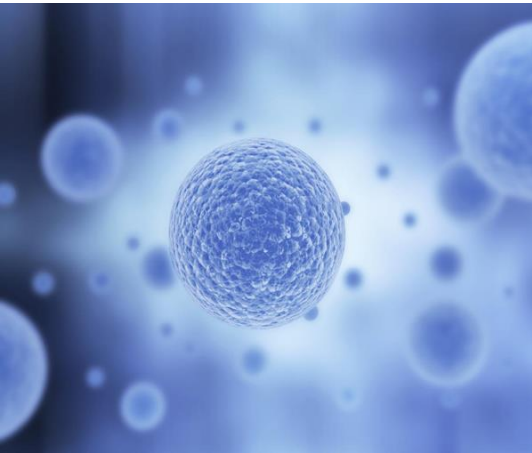


# **NICHD Strategic Plan**



# Mission

**The NICHD leads research and training to understand human development, improve reproductive health, enhance the lives of children and adolescents, and optimize abilities for all.**



# NICHD Vision Statement

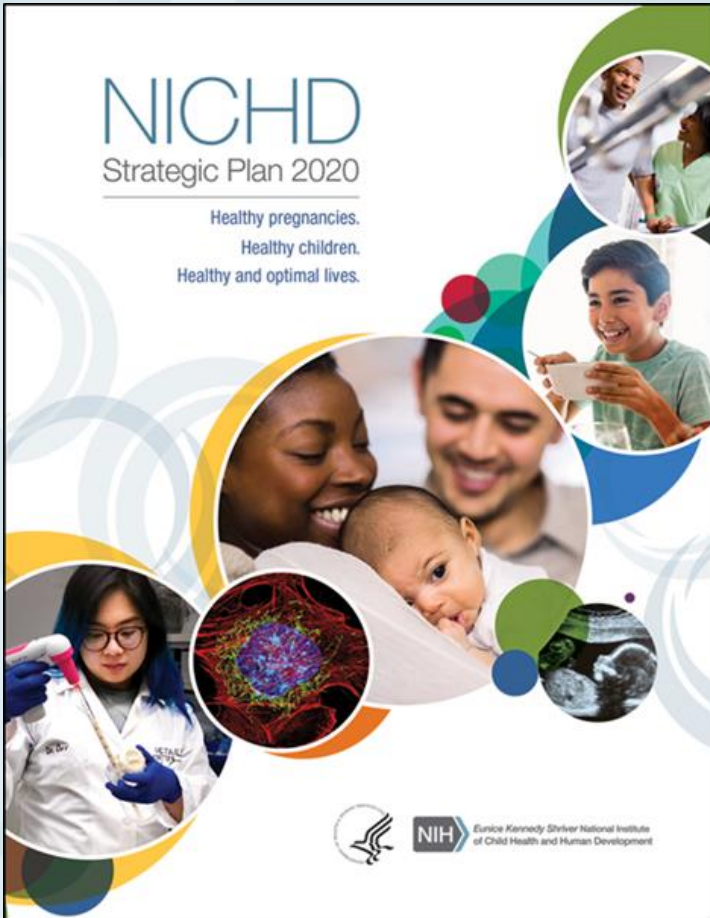


**Healthy pregnancies. Healthy children.  
Healthy and optimal lives.**





# NICHD Strategic Plan 2020

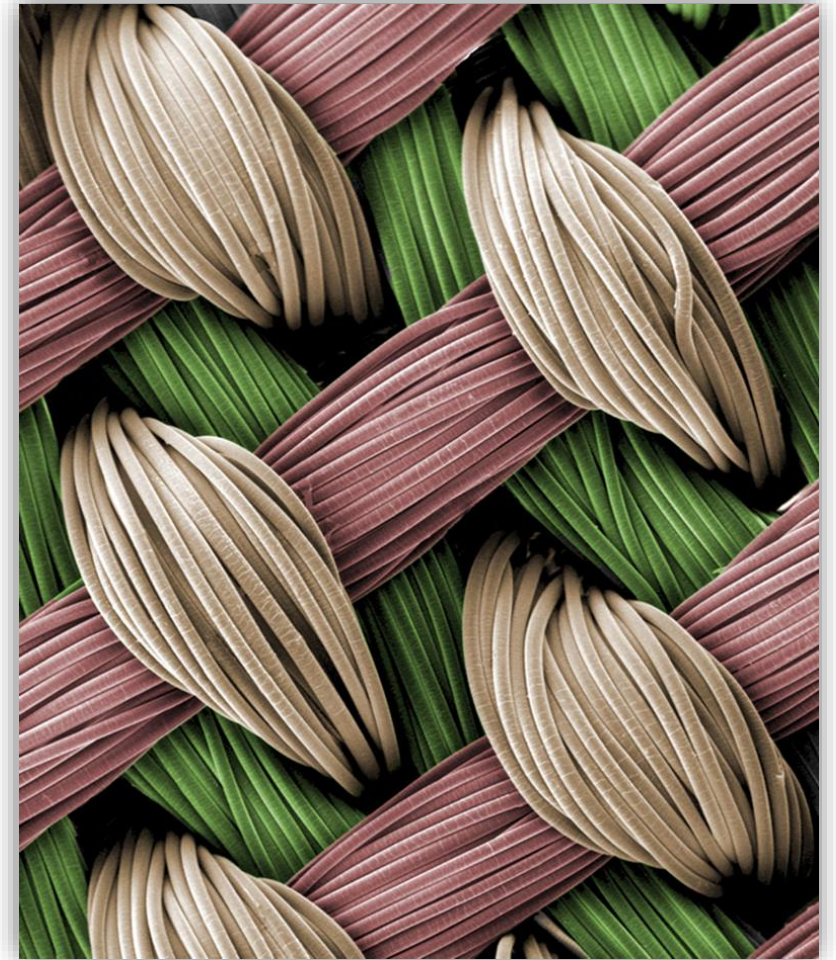


## Research Themes

- Understanding the Molecular, Cellular, and Structural Basis of Development
- Promoting Gynecologic, Andrologic, and Reproductive Health
- Setting the Foundation for Healthy Pregnancies and Lifelong Wellness
- Improving Child and Adolescent Health and the Transition to Adulthood
- Advancing Safe and Effective Therapeutics and Devices for Pregnant and Lactating Women, Children, and People with Disabilities

# Cross-Cutting Themes

- Global Health
- Health Disparities
- Prevention
- Nutrition
- Infectious Disease

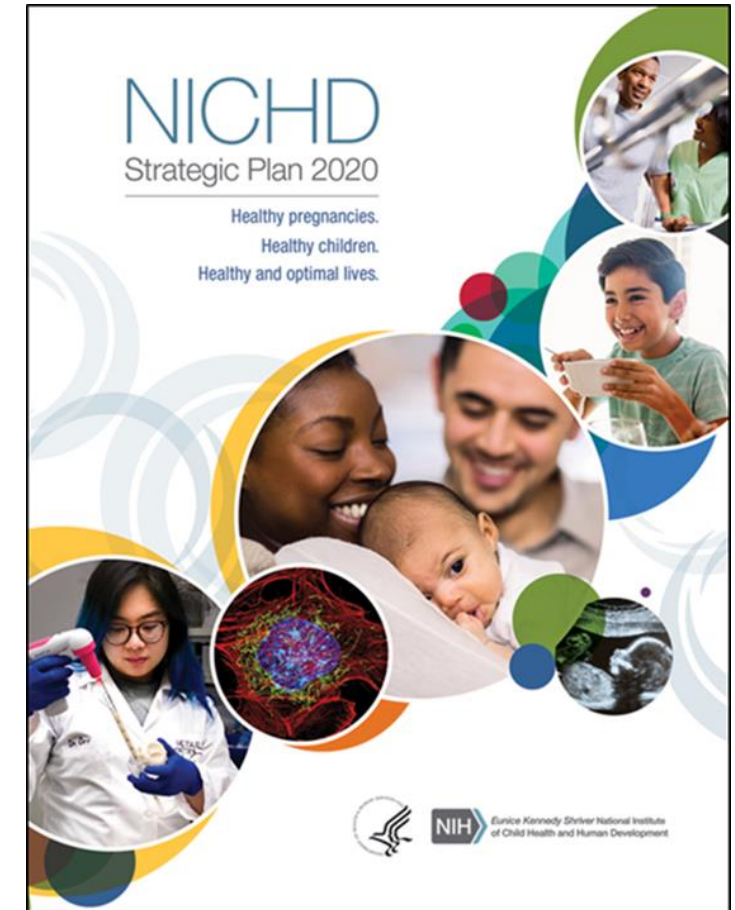


Credit: Guilak Lab, Washington University



# NICHD Strategic Plan 2020 - One Year Anniversary! Implementation Progress

- Engaging NICHD staff to develop activities to make progress towards each objective
- Cannot focus on everything simultaneously; will prioritize based on scientific opportunity and resource availability
- Implementation process will remain flexible to accommodate advances in technology, *national health priorities*, etc.
- Transparency – we are reporting progress regularly our Advisory Council and in other public forums





# Next Steps

- Continue refining implementation plans for all three focus areas of the Strategic Plan (Scientific Research Themes, Scientific Stewardship, Management & Accountability)
- Engage in new activities (and continue ongoing activities) to achieve the Goals and Objectives outlined in each focus area
- Develop metrics and track progress toward meeting Objectives
- Report progress externally via website (coming soon!)



## Explore the Plan



### Scientific Research Themes and Objectives

The NICHD Strategic Plan presents NICHD's research goals and objectives under five broad research themes that will enable NICHD to focus its efforts on the most significant public health challenges and advance science in these areas of priority.



### Aspirational Goals

NICHD encourages the field to transcend what is currently considered possible to advance research that could lead to healthy and optimal lives for all.

## Check Our Progress



See how NICHD is making progress toward our goals.

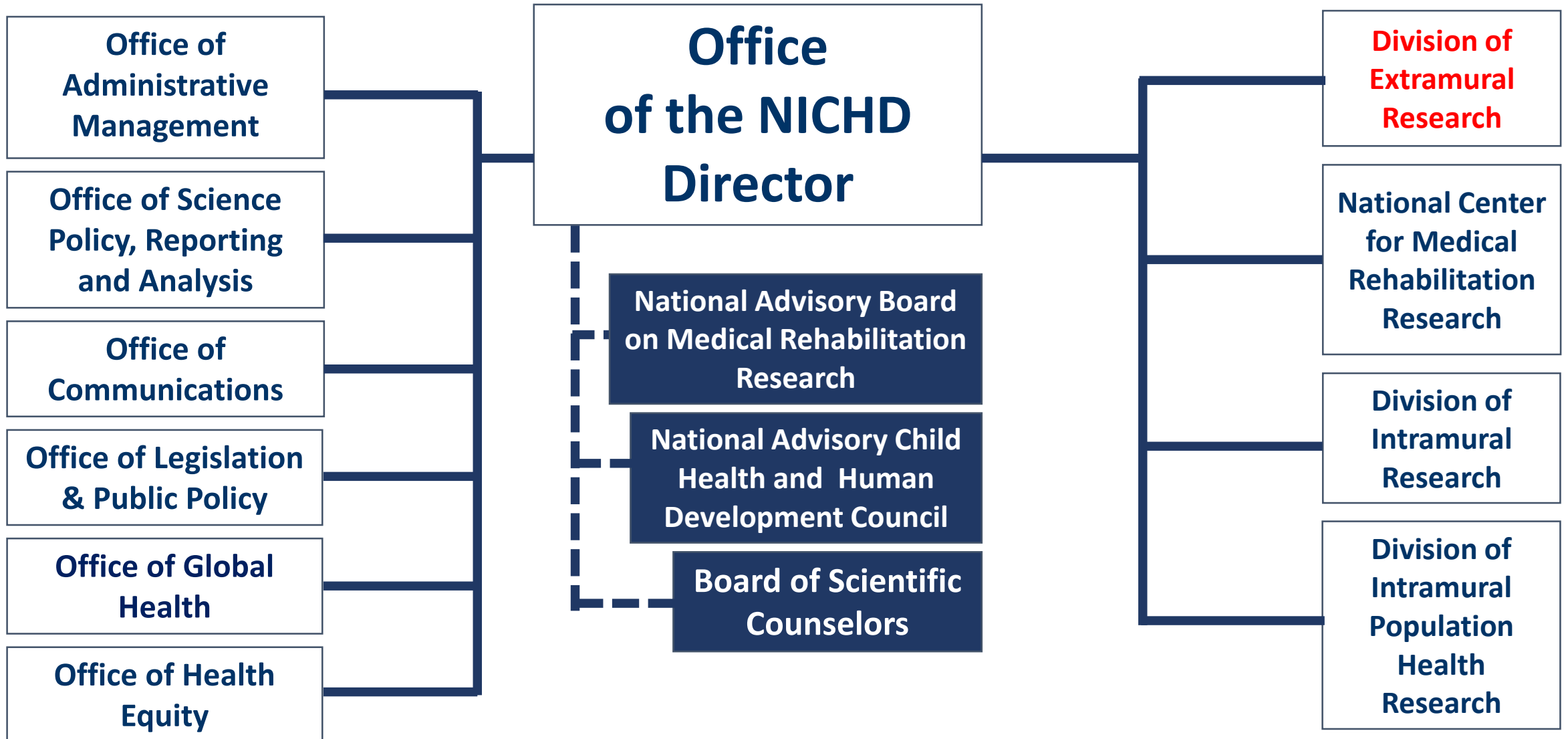
## Spread the Word



Share the NICHD Strategic Plan with your colleagues and followers using these resources.



# NICHD Organization







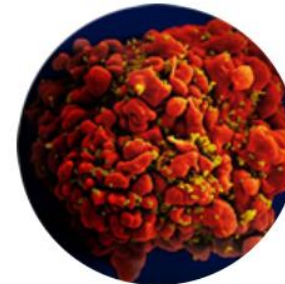
# Division of Extramural Research



[Child Development and Behavior Branch \(CDBB\)](#)



[Contraception Research Branch \(CRB\)](#)



[Maternal and Pediatric Infectious Disease Branch \(MPIDB\)](#)



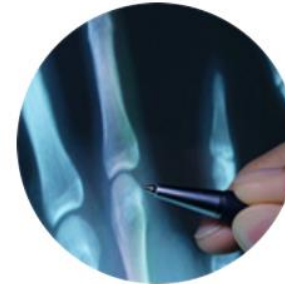
[Obstetric and Pediatric Pharmacology and Therapeutics Branch \(OPPTB\)](#)



[Developmental Biology and Structural Variation Branch \(DBSVB\)](#)



[Fertility and Infertility Branch \(FIB\)](#)



[Pediatric Growth and Nutrition Branch \(PGNB\)](#)



[Pediatric Trauma and Critical Illness Branch \(PTCIB\)](#)



[Gynecologic Health and Disease Branch \(GHDB\)](#)



[Intellectual and Developmental Disabilities Branch \(IDDB\)](#)



[Population Dynamics Branch \(PDB\)](#)

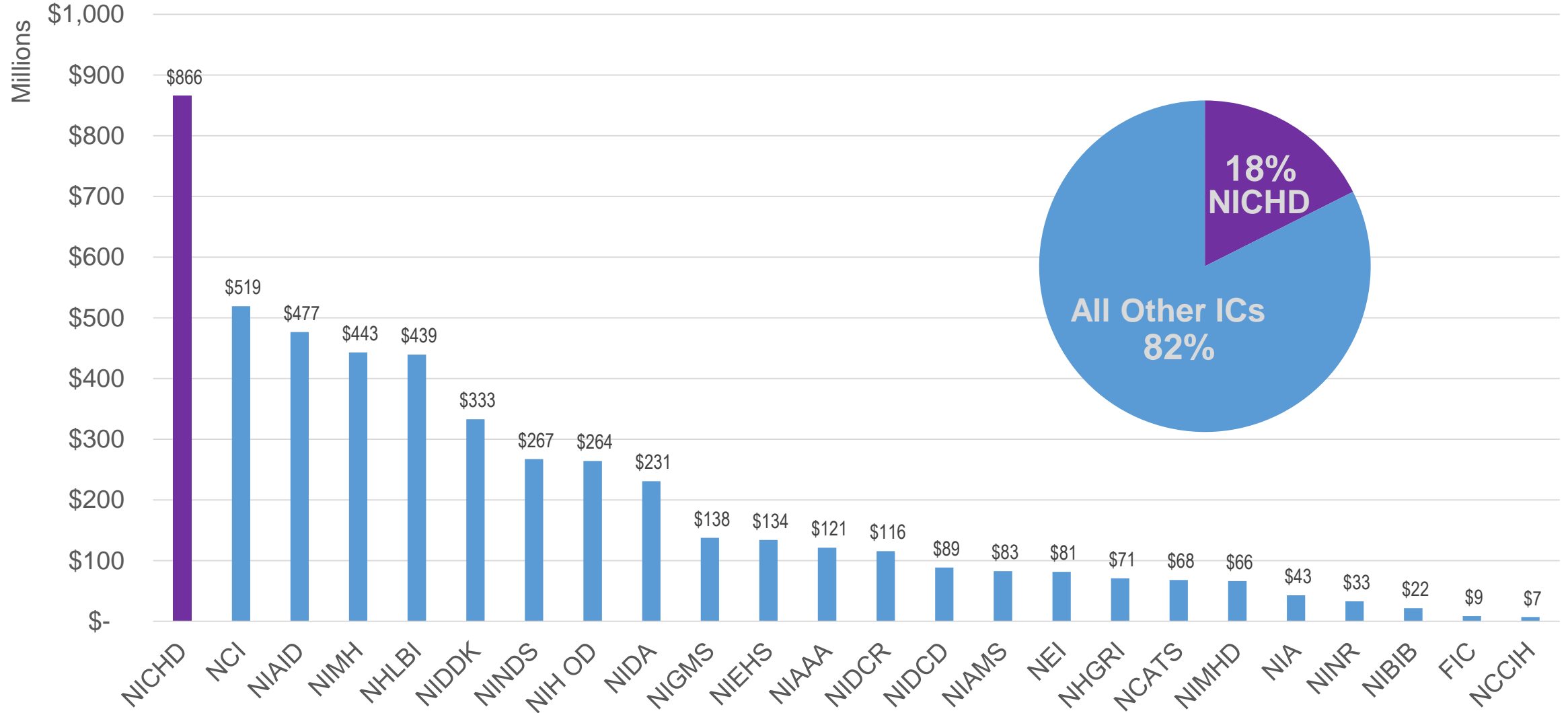


[Pregnancy and Perinatology Branch \(PPB\)](#)



# **NIH Pediatric Research Consortium (N-PeRC)**

# NIH Pediatrics Spending by IC, FY 2019



## NIH Pediatric Research Consortium (N-PeRC)

- Overview
- N-PeRC Members
- More Information

### Overview



N-PeRC is a trans-NIH initiative that began in June 2018 to capitalize on pediatric research expertise and resources across NIH's 27 institutes and centers through increased collaboration. The *Eunice Kennedy Shriver* National Institute of Child Health and Human Development (NICHD) is the lead NIH institute for the consortium.

NIH support for pediatric research currently totals more than \$4 billion. N-PeRC aims to harmonize these activities across institutes, explore gaps in the overall pediatric research portfolio, and share best practices to advance science. The consortium meets several times a year to discuss scientific opportunities and potential new areas of collaboration, including efforts to enhance research training for the next generation of pediatricians.

- ❑ Established in June 2018
- ❑ Chaired by Dr. Bianchi.  
Reps from >40  
institutes/centers/offices
- ❑ Meet every 2 months
- ❑ Subgroups meet more  
frequently



# Trans-NIH Pediatric Research Consortium (N-PeRC)

- Major activities
  - Transition to adult health care work group
  - Expanding the pediatric research workforce
  - Pediatric data resources
  - Increase study section reviewers with child health expertise
  - Regular review/discussion of existing trans-NIH pediatric programs and upcoming workshops (e.g., BPCA, ABCD, HEAL)
  - COVID-19
  - Pediatric devices



<https://www.nichd.nih.gov/research/supported/nperc>





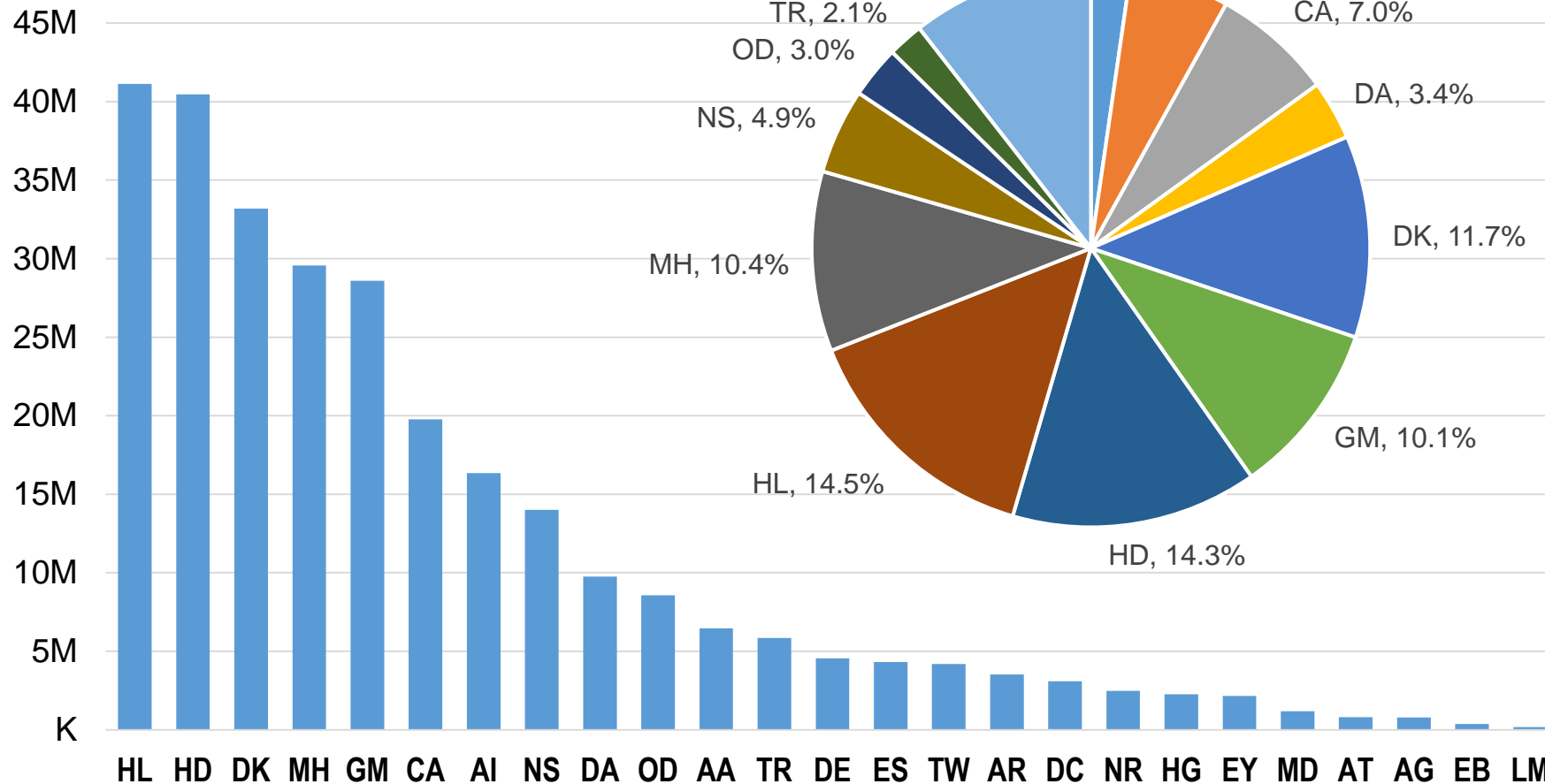
# Transition to Adult Health Care Working Group

- Adolescents with chronic conditions or disabilities face increased challenges
- N-PeRC working group conducted a portfolio analysis of current research in this area
- <https://web.cvent.com/event/1861c38c-e953-4ffa-a0f1-1688840fb295/summary>



# FY 2018 Pediatric Training/Career Development by IC\*

Total awarded: \$283,551,759



- Includes awards designated as pediatric in RCDC, as well as those affiliated with a pediatric department or pediatric hospital
- Some caveats:
  - Data likely underrepresent the amount of pediatric training support (e.g., NCATS' CTSAs not included)
  - Does not capture pediatric trainees within general training programs
  - Does not capture graduate students and postdocs on research project grants
  - "T" awards categorized by title only, not abstract (likely undercounted)

\*Preliminary data to be verified by ICs





- Centralized resource for researchers to share de-identified data from studies funded by NICHD. DASH also serves as a portal for requesting biospecimens from selected studies in DASH.
- Data sharing launched in August 2015; biospecimen request launched in March 2019
- Aims to accelerate scientific findings to ultimately improve human health



<https://dash.nichd.nih.gov>

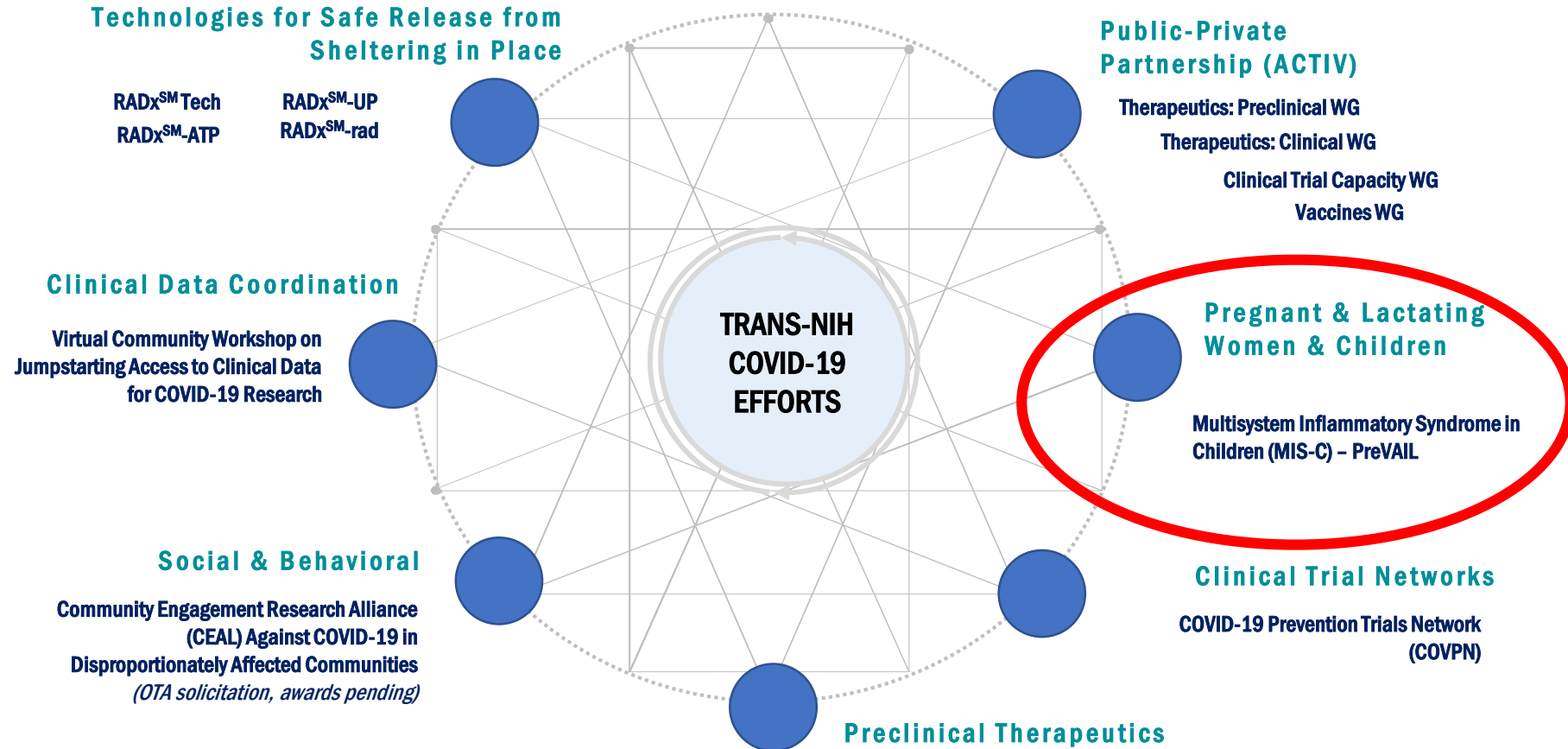
## Study Topics in DASH

Adrenal Gland Disorders	Newborn Screening
Amenorrhea	Obesity & Overweight
Autism Spectrum Disorders	Obstetrics
Birth Defects	Pediatric Injury
Breastfeeding & Breast Milk*	Pelvic Floor Disorders
Cerebral Palsy	Pharmacology
Child Health*	Preconception & Prenatal Care
Childbirth	Preeclampsia & Eclampsia
Children's Bone Health & Calcium	Pregnancy*
Delayed Puberty	Pregnancy Loss
Diabetes	Preterm Labor & Birth*
Driving Risk	Primary Ovarian Insufficiency
Early Learning	Puberty & Precocious Puberty
Early Labor and Birth	Rehabilitation Medicine
Fertility Problems	Sleep
High-Risk Pregnancy	Spinal Cord Injury
HIV/AIDS*	Stillbirth
Infant Care & Health *	Stroke
Infant Mortality	Sudden Infant Death Syndrome
Infertility & Fertility	Traumatic Brain Injury
Labor & Delivery	Turner Syndrome
Men's Reproductive Health	Women's Health*
Menkes Disease	
Necrotizing Enterocolitis	
Neuroscience	

\*biospecimens available

# TRANS-NIH COVID-19 EFFORTS

In response to COVID-19, NIH has **multi-IC collaborative** efforts to address interdisciplinary challenges associated with the pandemic



These efforts directly support the NIH's **Strategic Priorities** outlined in its **Strategic Plan for COVID-19 Research**:

Improve Fundamental Knowledge

Advance Research to Improve Detection

Support Research to Advance Treatment

Accelerate Research to Improve Prevention

Prevent and Redress Poor COVID-19 Outcomes



# “Long COVID”

## Workshop on Post-Acute Sequelae of COVID-19

December 3, 2020–December 4, 2020

10:00 AM-5:00 PM

🕒 Viewing in Eastern Time

### Agenda

- Goal: To summarize existing knowledge of post-acute sequelae of COVID-19 and identify key knowledge gaps.

<https://web.cvent.com/event/cf41e3b5-04e7-4e09-b25d-f33dfcd16fed/summary>

- NIAID led this meeting that included a pediatric talk by Dr. Peter Rowe and a pediatric break out session led by Dr. Atz.
- Working with NINDS, NHLBI, and NIAID to explore this in existing collaborations







# **Loan Repayment Program**

# About the LRPs

NIH Loan Repayment Programs (LRPs) represent a **vital component** of our nation's efforts to keep health professionals in research careers

## *Here's how it works:*

**YOU:** Commit to perform research for 2 years



**NIH:** Repays up to **\$50,000/year** of your **qualified educational** debt & covers resulting Federal taxes (39%)



**Outcome:** Increase in nation's stock of biomedical research scientists



# Basic LRP Eligibility Criteria

Extramural



## Doctoral Degree

M.D., Ph.D., or equivalent

**\*Exception: Contraception & Infertility Research LRP**



## Research Funding

Domestic nonprofit, university, or government organization;

**\*NIH grant support NOT required**



## Citizenship

U.S. Citizen or permanent resident



## Educational Loan Debt

At least 20 percent of applicant's annual income



## Research Time

At least 20 hours/week



# Contact LRP

Website: [www.lrp.nih.gov](http://www.lrp.nih.gov)

Phone: 866-849-4047 (9am-5pm, ET)

Email Inquiries: [lrp@nih.gov](mailto:lrp@nih.gov)

 Twitter: [@NIH\\_LRP](https://twitter.com/NIH_LRP)

 Facebook: [www.facebook.com/nihlrp](https://www.facebook.com/nihlrp)





**We are hiring!**



# We are hiring!

- Senior Policy Advisor for Clinical Research
- Branch Chief
  - Pregnancy and Perinatology Branch
- Program Officers
  - Child Development and Behavior Branch
  - Gynecologic Health and Disease Branch
  - Intellectual and Developmental Disabilities Branch
  - Obstetric and Pediatric Pharmacology and Therapeutics Branch
  - Pregnancy and Perinatology Branch
- Scientific Review Officer
- Division of Intramural Research Investigators
  - Developmental biology
  - Translational
  - Early stage clinical

More info at <https://www.nichd.nih.gov/about/jobs>



**Thank you!**  
**Questions?**



National Portrait Gallery, David Lenz, 2009

